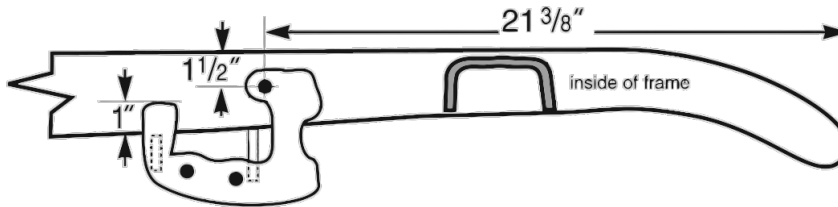


# AR-2152 AR-2154

**Weld-on Vega Steering Adapter for 1928-31 Ford A, 1932-34 Ford using Small Block Chevy V8 (frame must be boxed)**

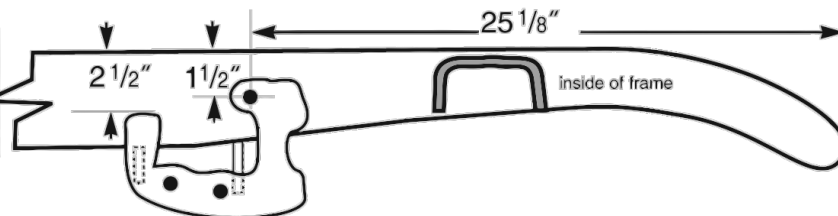
- 1** Position Vega steering adapter as shown below. Clamp in place and mark hole with a center punch. Drill hole thru frame.

**1928-31  
Ford "A"  
DIMENSIONS**



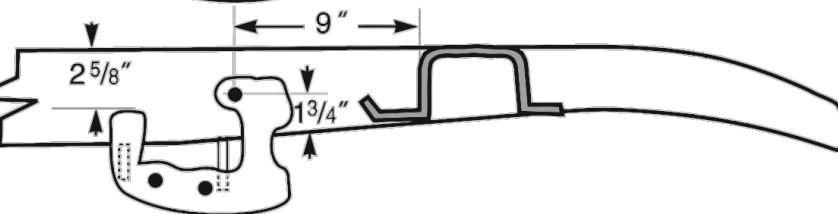
square measure at front frame horn

**1932  
Ford  
DIMENSIONS**



square measure at front frame horn

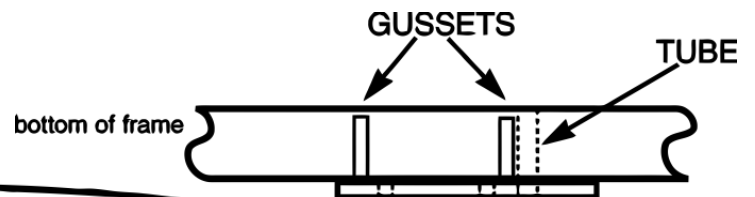
**1933-34  
Ford  
DIMENSIONS**



- 2** Enlarge hole to 3/4" and insert spacer tube. Before welding, check tube for straightness (holes should be exact 90 degrees in all directions to frame rail). If not, then bolt will not screw into Vega box. Once you have checked, then weld.

- 3** Position and tack weld adapter in place. Locate and tack weld the two gussets between frame and the adapter. Doublecheck location by bolting steering box to adapter, then remove box.

- 4** Lastly, weld adapter to frame.



bottom view showing outside of frame and installed steering adapter.

### Notes:

- \* Steering bracket may need notching to clear engine mounts.
- \* Check sway bar clearance and fit. Sway bar mounts must be installed before welding on steering bracket.
- \* Measurements given may vary with specific application.

This recess on steering adapter is to clear sway bar.

