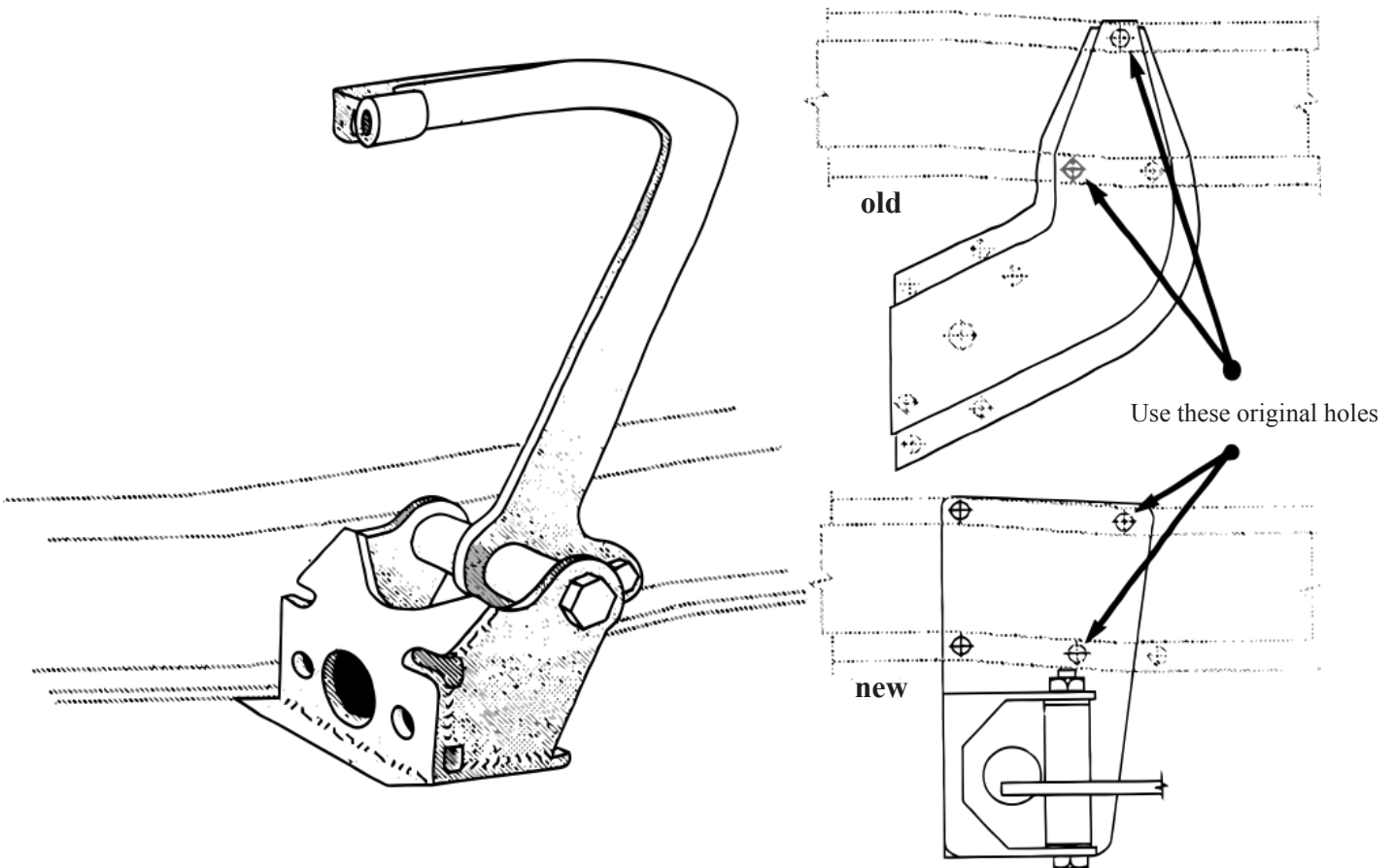




AS-1026

1937-39 Chevy Bolt-on Master Cylinder & Pedal Mount

- 1** Remove old master cylinder and pedal assembly. Remove the curved original pedal mount from frame rail, leaving rivet holes in frame.
- 2** Place new mount under frame and line up using two rivet holes from original mounting. Install bolts in these two holes. Ream drill if needed.



- 3** Drill remaining holes and install bolts.

4 Pedal installation notes!

A. The pedal can not go through the floor in the original position when using a Chevy V8. The pedal furnished is straight but can be bent for clearance.

B. Its best to install the brake pedal and the steering column at the same time. There is usually an interference problem. By installing them together, a suitable location for both can be found. Possible solutions include relocating or raising the column at the firewall and/or bending the pedal arm for clearance.

Finding a safe working combination is the responsibility of the installer.