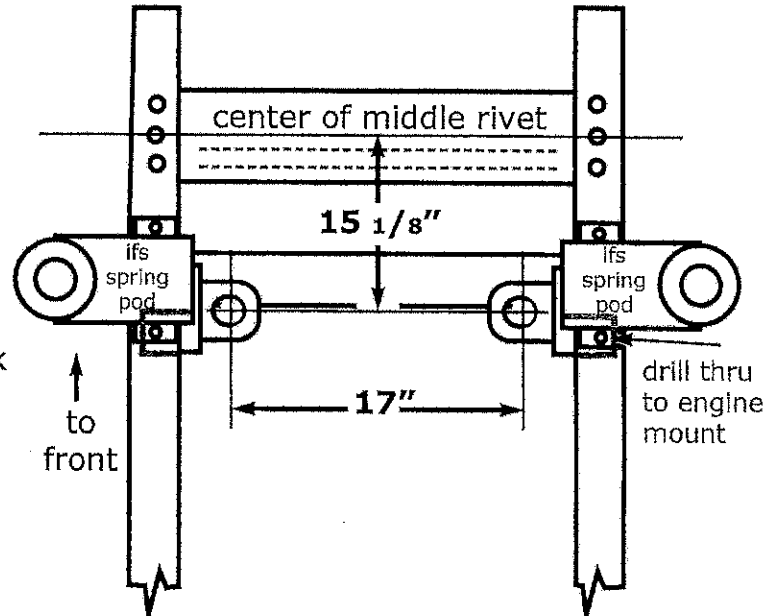
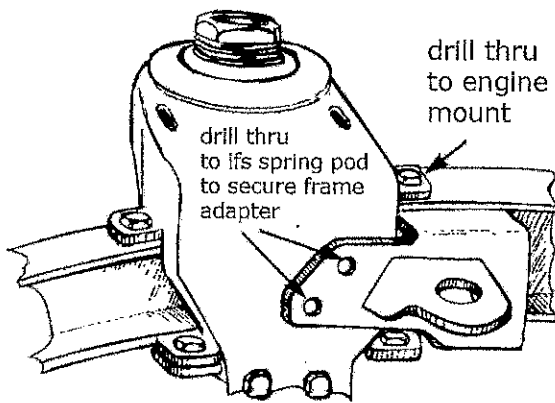


CP-1160LS

1948-54 Chevy 1/2tn Pickup Chevy LS Engine Mount Kit (using Chassis Engineering Bolt-on Pinto Mustang IFS)

1 Original engine, transmission and steering column will already have been removed after installation of the Chassis Engineering IFS. If not, remove these and install IFS as per instructions.

2 Install frame adapters using dimensions shown. Fit frame adapters into frame and against IFS spring pod and clamp in place. Recheck all dimensions before drilling holes.



3 Bolt in place once mounts have been securely clamped. Drill 3/8 inch mounting holes as shown above. Use 4 bolts per side, one each on top and bottom plus two into each IFS pod.