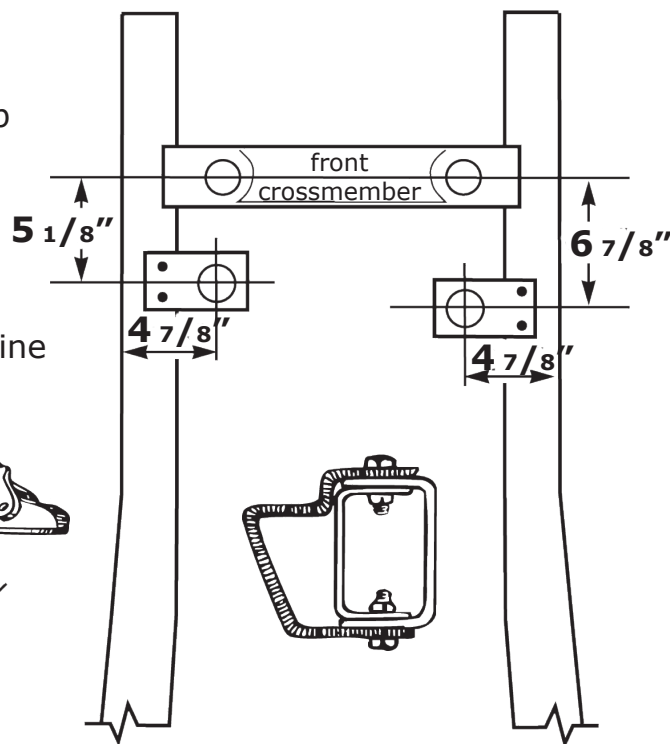
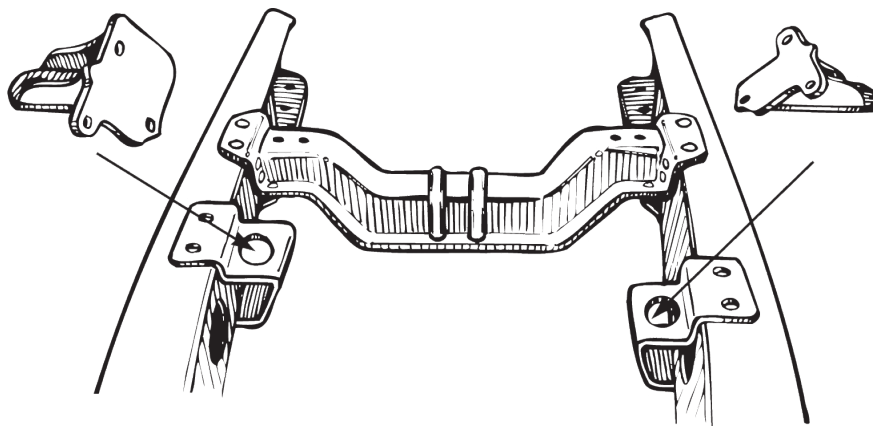




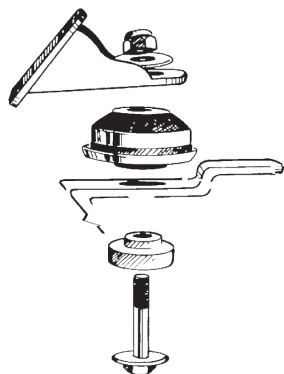
# CP-2102

## 1941-48 Ford Car Small Block Chevy Engine Mount Kit

- 1 Remove original engine and transmission
- 2 Place frame adapters around frame and clamp into place as shown. Make sure adapters are straight and level.
- 3 Drill bolt holes to 3/8 inch. Install bolts and tighten.
- 4 Bolt offset engine mount to driver side of engine and standard mount to the passenger side.



- 5 Install cushion set as shown.



Exhaust manifold clearance can be had, even with power steering, by using a 1968-69 Chevy Pickup RH manifold on the driver side.

