

• Installation Instructions
 REAR SWAY BAR
 FOR 1933-34 FORD CAR

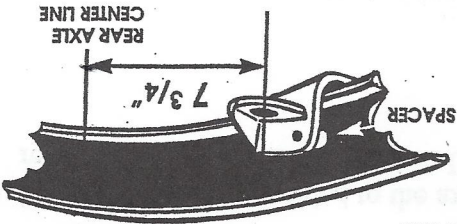


Not to be copied or reproduced without permission ©

NOTE: This bar will also fit a great many different cars. Since it bolts to the rear-end, it is fairly easy to mount, requiring fabricating only the linkage mounts on the frame.

1 Bolt bar to bottom of axle as shown below. Center side to side. Drawing shows a bolt on bracket. Ends extend forward under axle.

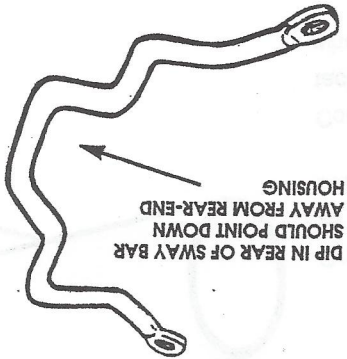
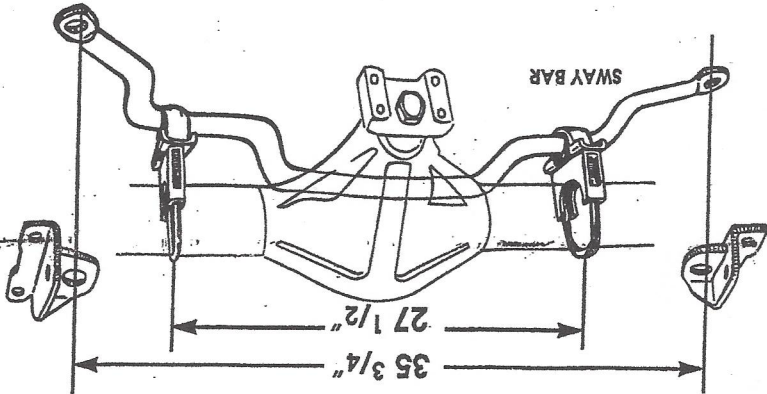
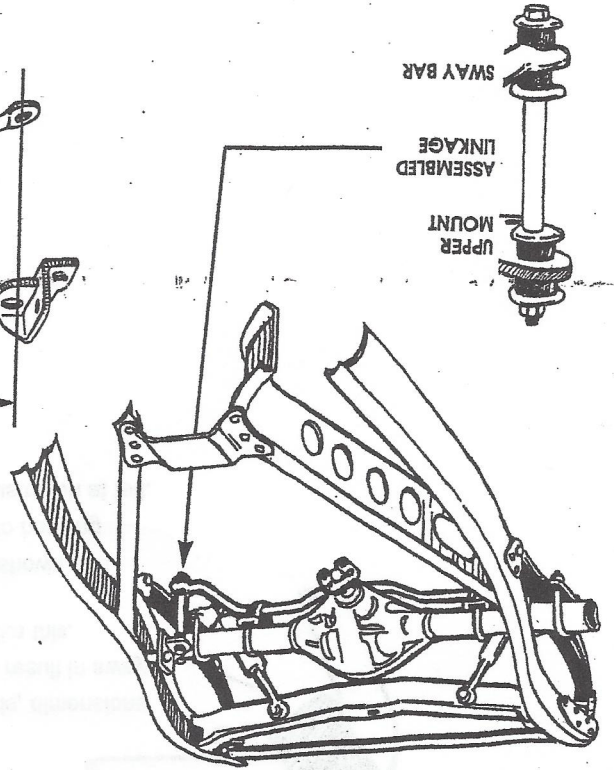
2 Straighten frame lower lip to 90 degrees where linkage mount fastens. Clamp frame mounts for linkage in place and locate, centering bushing hole in mount $7\frac{3}{4}$ inches forward of the axle center line (see illustration at right). Right and Left mounts are mirror images. Be sure mounts are straight before drilling mounting holes. Common sense will tell you which mount is right and which is left, but just in case, the bent brace on tab goes to rear.



3 After locating mounting point, carefully slip mount from inside of frame and slide it over (under?) the frame lip. Mounting holes can now be marked on the bottom frame lip. Drill to $11/32$ ". Put mount back on inside of frame lip and bolt in place.

4 Drill last hole thru side of frame using mount as guide. Insert 2 " space between frame and mount, then bolt in place.

5 Assemble linkage as shown below.



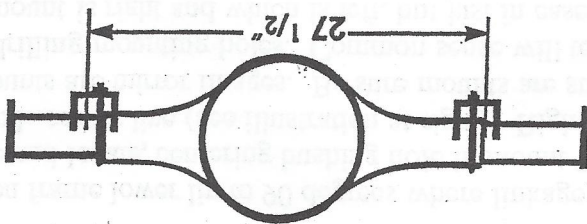
Sway Bar Mount - Versails and Granada 9 inch Disc Brake Rear Ends Only

1 NOTE: There is a large U-bolt and a smaller U-bolt. There are also two separate axle mounts. One will fit the large U-bolt and one the small. They will not interchange.

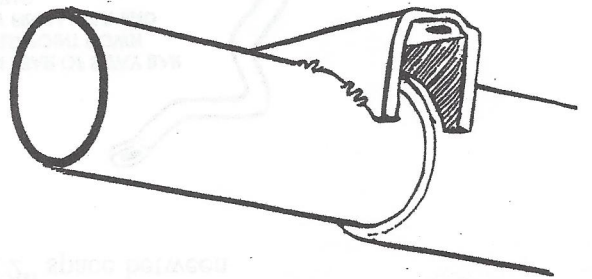
2 The bar mounts should be level with the ground, however if needed, the bar can be moved forward or backward slightly by rotating the mounts on the axle side housing. Final placement depends on usage. Be sure to check for clearance when done.

3 The U-bolt will go toward the center and the bar toward the wheel. When installing, note larger part of the rear end housing. Center the pads on the housing making the sway bar mounting holes 27 1/2" center to center. Remember that the differential is not centered on the axle. Measure from the hubs.

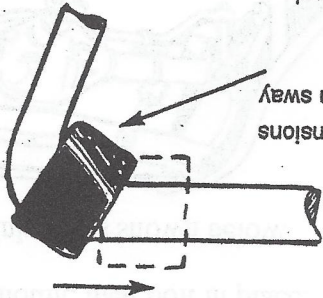
4 The mounts can be welded to the axle, but recommend bolting them on with U-bolts.



Center the pads on the housing making the sway bar mounting holes 27 1/2" center to center.



On Lincoln rear ends, dimensions as noted above will result in sway bar mount looking like this.



Correct location as shown and tack weld brackets to housing when done. See illustration at left.